

NEWT TOOLING!

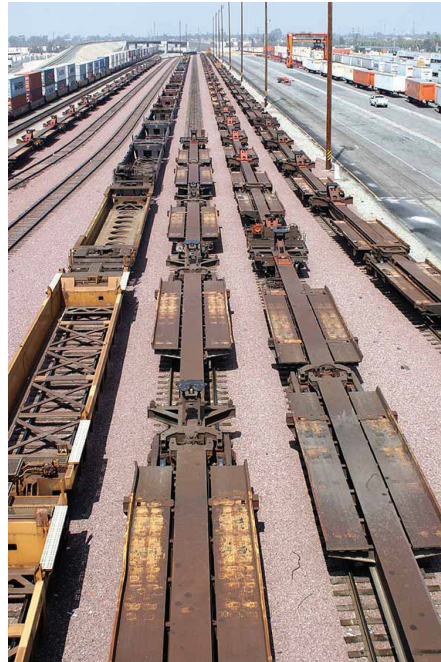
NEWT TOOLING!

# "Executive Line" HO Ready To Run 53' "RAF53C" Spine Cars

The spine cars are one of the most recognizable freight cars on the rails today. Named after their simple, spine-like appearance, these versatile cars carry anything from highway trailers, to international, corrugated containers. Built in late 1997 by Trinity Rail for TTX, these 5-Unit Spine Car's feature TTAX reporting marks. While very similar to other 53' Trinity Spine Cars, the "RAF53C" class boasts nearly 250, 5-car sets on the TTX roster.

## Features

- Ready-To-Run
- Die-Cast Metal & Plastic
- Fine-Scale Detail All Around
- Chemically Etched Walkways
- Accurately Painted/Printed
- Collapsed or Raised Hitches!
- KD (R) Couplers
- Seven Unique Numbers!



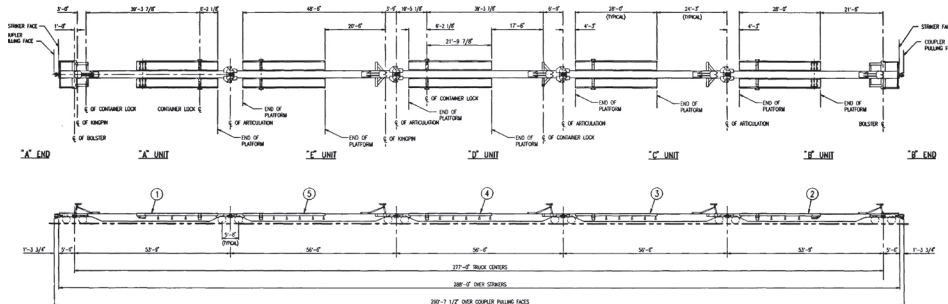
Trinity "RAF53C"  
5 Unit Spine Car Set  
MSRP 169.95

#40860 TTAX Road #555002  
#40861 TTAX Road #555026

Trinity "RAF33"  
3 Unit Spine Car Set  
MSRP 99.95

#40858 TTAX Road #355015  
#40859 TTAX Road #355122

RAF53C 5 Unit Trinity Spine car



RAF33 3 Unit Trinity Spine car

