

INSTRUCTIONS FOR #100900 PRR H-9 CONSOLIDATION KIT

These instructions provide photographs of completed model, exploded view drawings, diagrams, step-by-step instructions and an itemized parts list. If for reasons beyond our control, any shortage or faulty part is found, write directly to the factory including name of your dealer and date of purchase. Return any defective parts for exchange. The builder should study the instructions and drawings to attain a working knowledge of proper procedure. Assembly should be in sequence outlined in this manual to assure proper construction. We have included some extra parts in case you misplace or drop them on the floor. **DO NOT RUN THE MECHANISM OR ENGINE UPSIDE DOWN.**

TOOLS

This is a builders kit, you will need a few tools. You will find use for the following: small hammer, several small files, jewelers screwdriver (a set is convenient), a 6" flat file with a fairly fine cut, knife, pliers, flush and tweezers.

BEFORE PAINTING YOUR MODEL OR DETAIL THE BOILER, WE RECOMMEND THAT YOU BUILD THE COMPLETE MECHANISM ATTACH THE UNDECORATED BODY AND THOROUGHLY TRACK TEST IT.

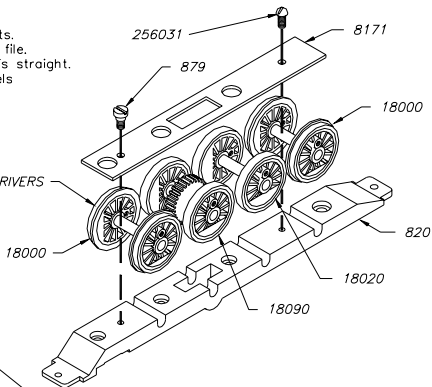
STEP #1

Clean flash from edges of parts.
File mating surfaces on a flat file.
Check to see that the frame is straight.
Assemble and assure the wheels spin freely.
Oil lightly.

Subkit 100903, 100904 & 100906



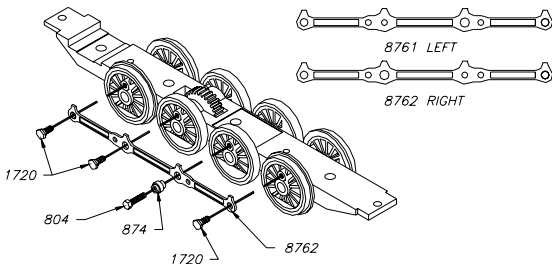
INSULATED DRIVERS
THIS SIDE



STEP #2

Assemble side rods as shown.
The fluted surface faces out.
Assure the wheels spin freely.
Oil lightly.

Subkit 100901

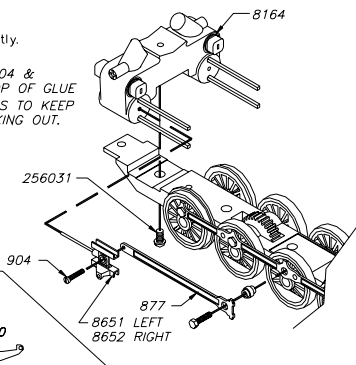
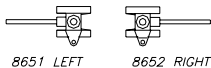
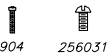


STEP #3

The mechanism must roll freely. Oil lightly.

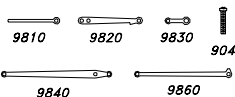
Parts in subkit
100901 & 100903
Parts shown full size

*CUT OFF 904 &
PUT A DROP OF GLUE
ON THREADS TO KEEP
FROM BACKING OUT.*

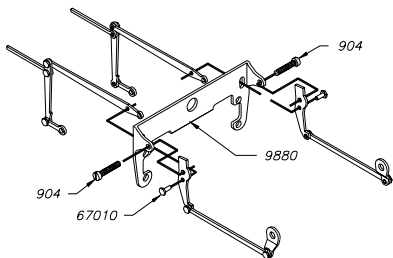
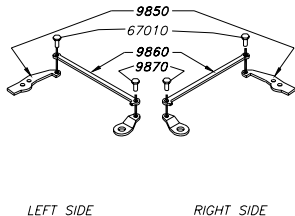
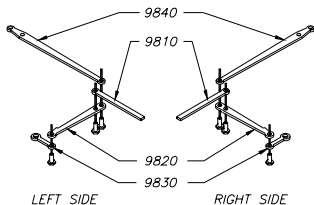


STEP #4

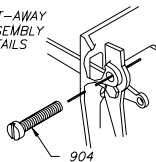
Parts in subkit #100905
Parts shown full size



Rivet valve gear together using care not to assemble too tightly.
Valve gear must dangle loosely or binding will result.



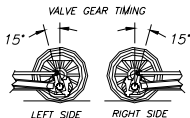
*CUT-AWAY
ASSEMBLY
DETAILS*



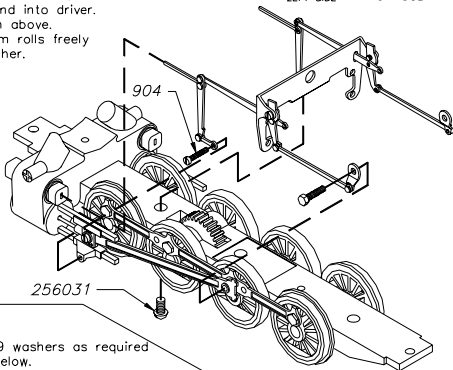
*CUT OFF 904 &
PUT A DROP OF GLUE
ON THREADS TO KEEP
FROM BACKING OUT.*

STEP #4A

- 1 Slide 9810 into cylinder.
- 2 Install 256031 screw thru frame and into 9890 hanger.
- 3 Install 904 screw thru 9830 and into crosshead.
Do not tighten. Cut off end of screw.
- 4 Put a small amount of glue on end of threads of 904 to prevent it from working out.
- 5 Remove 805 screw from center driver and insert thru 877, main rod, side rod and into driver.
- 6 Time valve gear as shown above.
Assure that the mechanism rolls freely before proceeding any farther.



Parts in subkit #100905

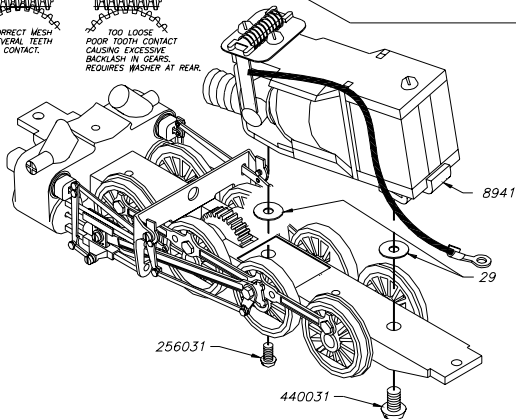


STEP #5

Adjust gear mesh using #29 washers as required to obtain mesh as shown below.

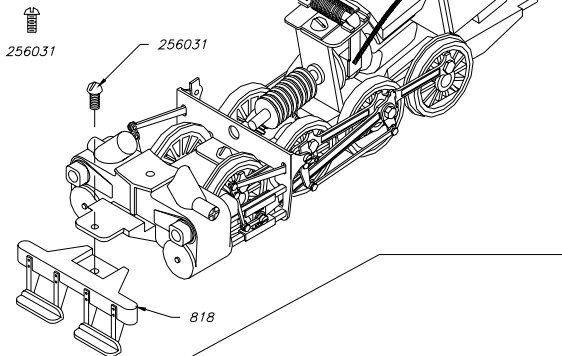


Parts in subkit
#100903



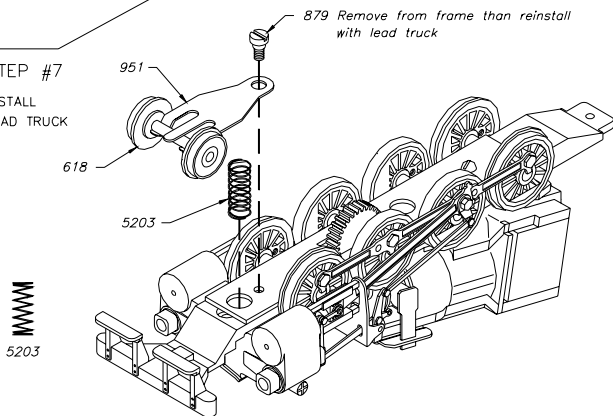
STEP #6

INSTALL PILOT



STEP #7

INSTALL
LEAD TRUCK



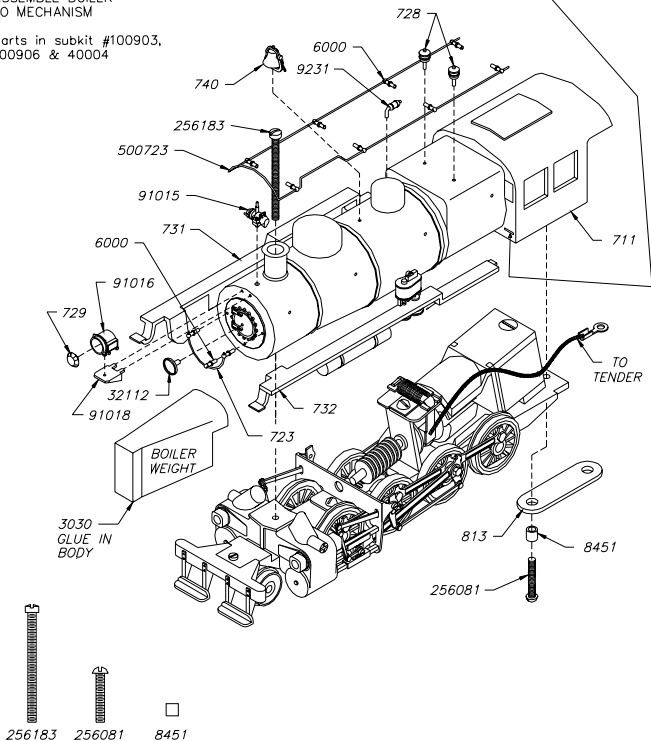
5203

STEP #8

ASSEMBLE BOILER TO MECHANISM

Parts in subkit #100903,
100906 & 40004

Slot in the cab for the walk my be flashed over.
Punch out from the inside of the cab with a screwdriver



DO NOT PAINT BOILER UNTIL AFTER THOROUGHLY TEST RUNNING
THE COMPLETE MECHANISM.

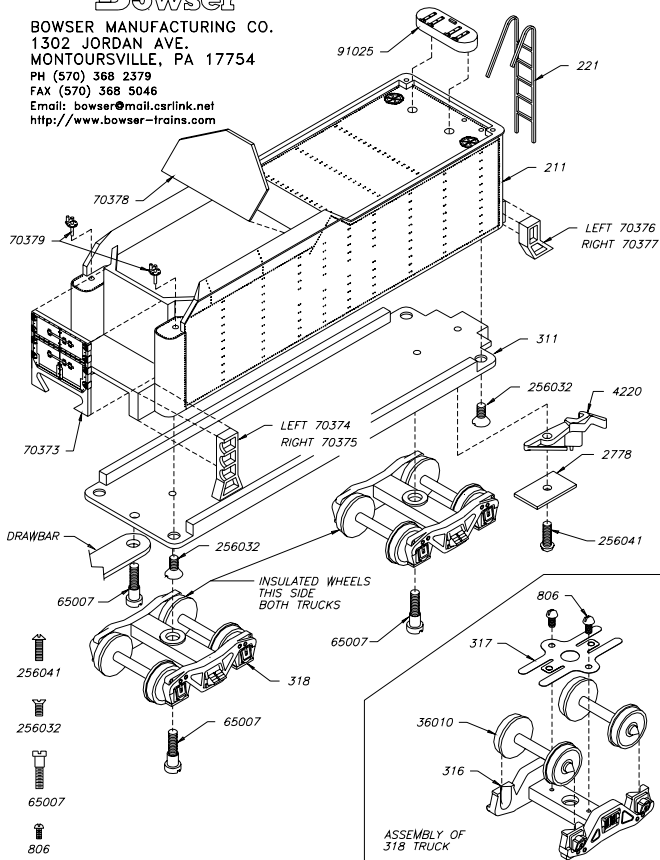
BOWSER

13000 GAL TENDER KIT 150635

BOWSER MANUFACTURING CO.
1302 JORDAN AVE.
MONTOURSVILLE, PA 17754

PH (570) 368 2379
FAX (570) 368 5046

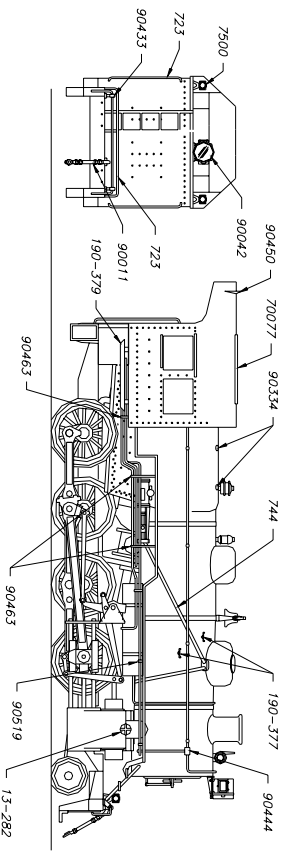
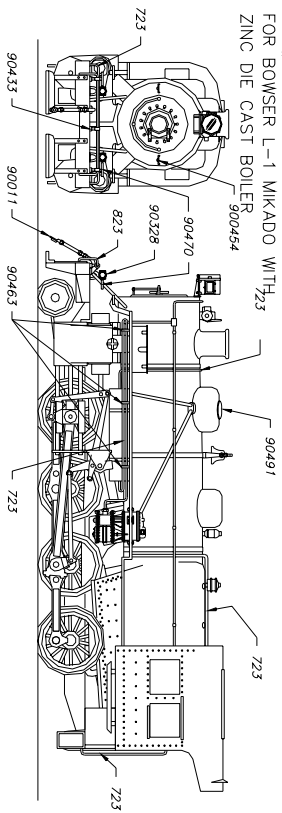
Email: bowser@mail.csrlink.net
<http://www.bowser-trains.com>



BOWSER MANUFACTURING
PO Box 322
MONTROUSVILLE, PA 17754













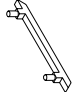




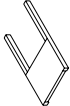
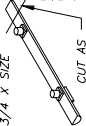


PHONE (570) 368-2516
FAX (570) 368-5046

KIT # 100815 PRR L-1 SUPERDETAIL KIT
FOR BOWSER L-1 MIKADO WITH
ZINC DIE CAST BOILER



K4 SUPER DETAIL PARTS IDENTIFICATION

KIT #100515

 1.3-282 1 PAIR	 823 2 PIECES	 2X SIZE 90444 2 PIECES	 2X SIZE 90492 2 PIECES	
 190-320 1 PIECE	 90018 1 PIECE	 90450 1 PIECE	 2X SIZE 90519 3 PIECES	
 2X SIZE 190-377 2 PIECES	 90053 2 PIECES	 90454 2 PIECES	 2X SIZE 90463 2 PIECES	
 190-379 1 PAIR	 90328 2 PAIR	 2X SIZE 90463 5 PIECES		
 190-477 1 PIECE	 90334 6 PIECES	 90479 1 PIECE		
 3/4 X SIZE CUT AS REQUIRED 90074 & 90075 1 PAIR	 90433 6 PIECES	 90491 2 PIECES		

(X) PIECES .020 X 6" WIRE

(1) PIECE .032 X 6" BRASS WIRE

PAGE