

# NORTHERN 4-8-4



NORTHERN 4-8-4, SUPERDETAIL MODEL PHOTO

## MODEL SPECIFICATIONS

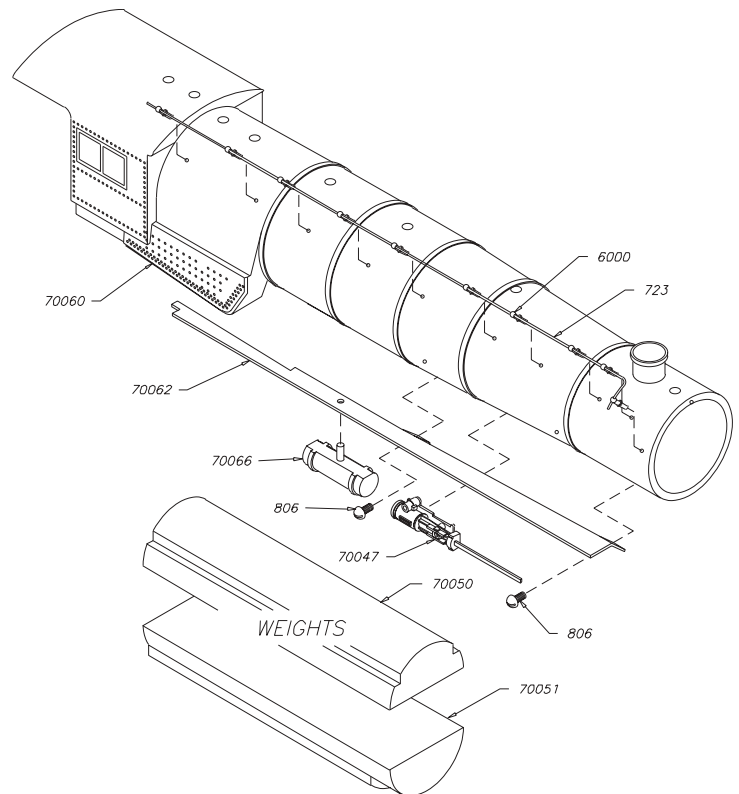
Length with Tender	12 5/8"
Height	2 1/8"
Weight	2 lbs 15 oz.
Minimum Radius	18"
Power	Bowser DC-71
Drivers	69"

## BOWSER NORTHERN 4-8-4 - READY-TO-RUN, KITS, AND ACCESSORIES

#100475	Northern w/ Tender, Kit	#100412	Painted Engineer & Fireman w/ Back head & Floor
#100416	Smoke Unit Kit	#500405	Assembled Valve Gear
#100485	Northern Superdetail Kit		

### VALVEGEARASSEMBLY:

KIT	#100405
ASSEMBLED	#500405



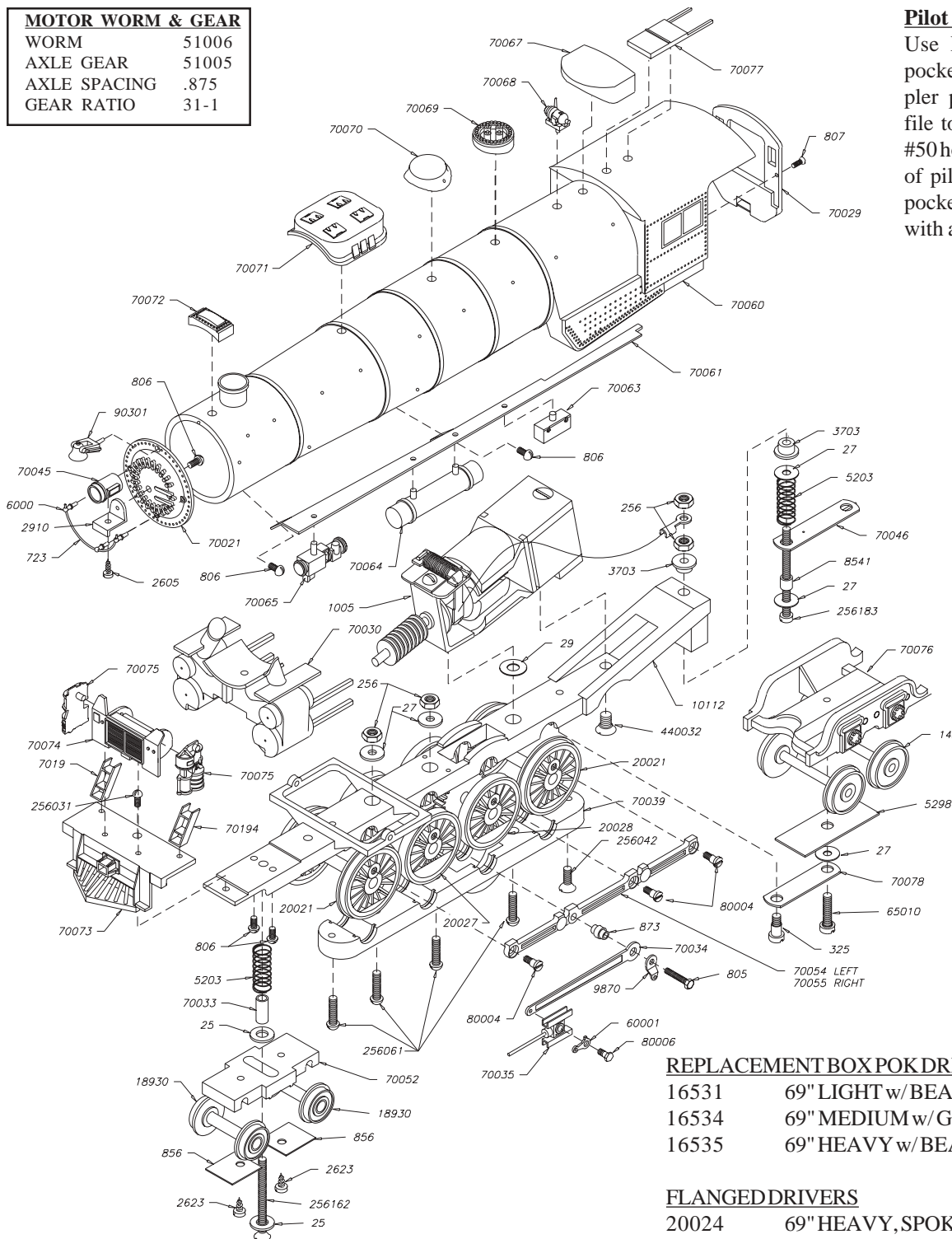
# NORTHERN 4-8-4

## MOTOR WORM & GEAR

WORM	51006
AXLE GEAR	51005
AXLE SPACING	.875
GEAR RATIO	31-1

## Pilot coupler

Use Kadee® #5 coupler & pocket. Remove cast on coupler pocket from pilot and file to clear pocket. Drill a #50 hole 1/8" back from front of pilot. Tap 2-56. Attach pocket and coupler to pilot with a 2-56 screw.



## REPLACEMENT BOX POK DRIVERS

16531	69" LIGHT w/ BEARINGS, FLANGED
16534	69" MEDIUM w/ GEAR, FLANGED
16535	69" HEAVY w/ BEARINGS, FLANGED

## FLANGED DRIVERS

20024	69" HEAVY, SPOKE
20026	69" MEDIUM, SPOKE

## Marker Light Jewels:

Rule of thumb: Green to front, Amber to side, and Red to rear.

## Smoke Unit Kit For Bowser & Penn Line Locos

Kits includes a Model Power Smoke Unit, Instructions and the necessary mounting hardware. Smoke fluid not included.

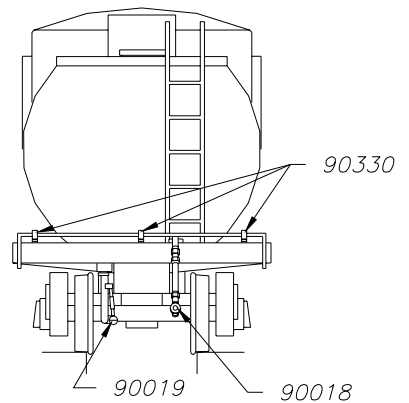
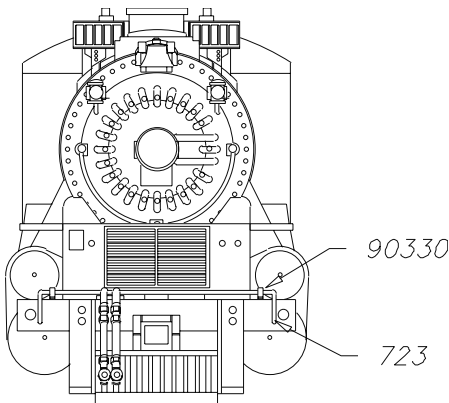
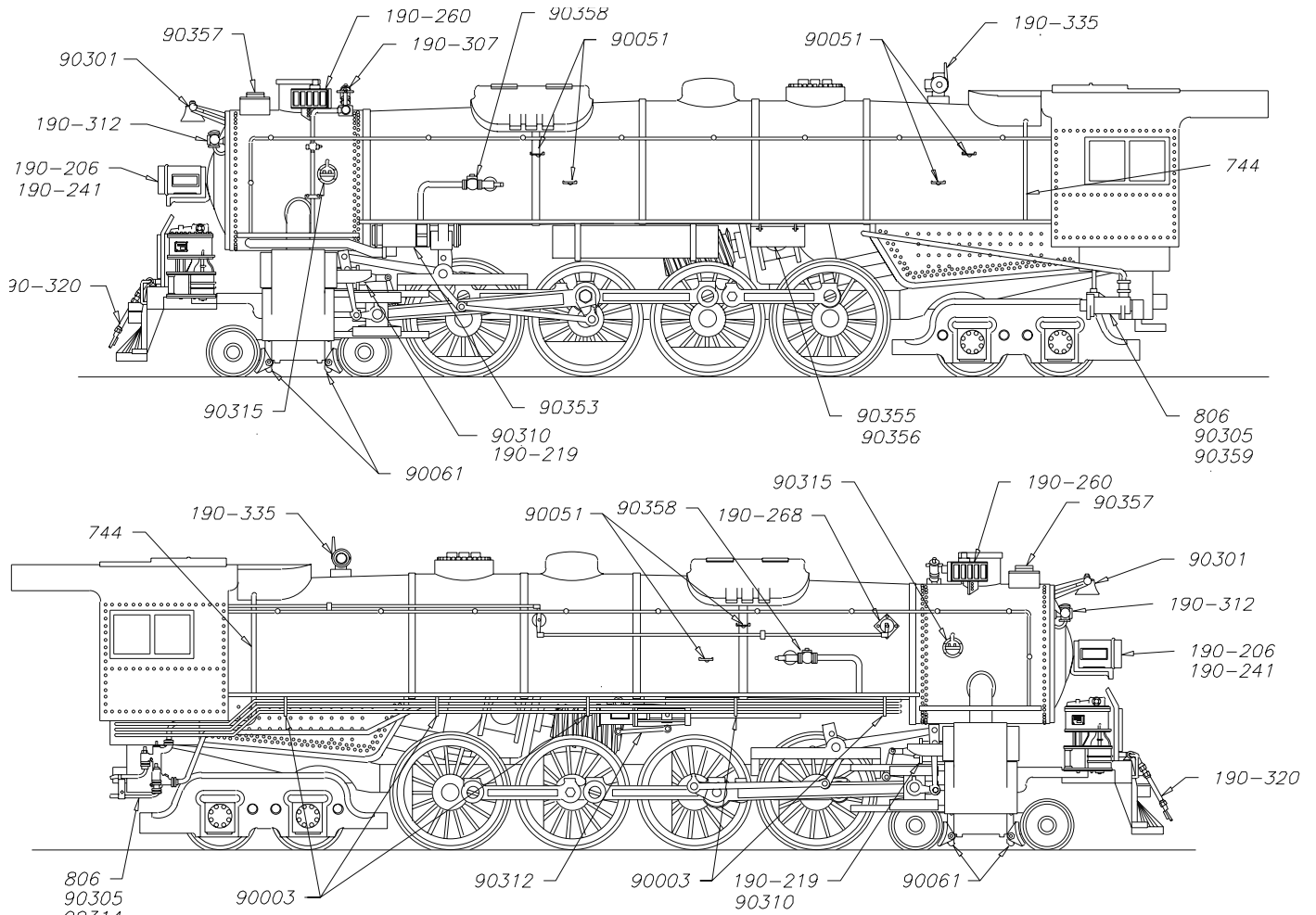
**#100416** For USRA Northern. Requires drilling smoke stack to accept the smoke unit.

## Operating Headlight

If you already have a headlight. Use a #91039 Grain of Rice bulb for headlight. Drill out headlight and drill a hole in front of generator to run wire to motor brushes. Solder one wire to each brush.

# NORTHERN 4-8-4

## SUPER DETAIL KIT #100485



PART #	AMOUNT	DESCRIPTION
723	6	.020 wire, 8"
744	3	.032 wire, 4"
806	3	0-80 screw
90003	7	Piping bracket
90018	1	Air & signal hose
90019	1	Steam hose
90051	2	Boiler steps, pr.
90061	2	Brake shoes, pr.
90301	1	Bell & bracket
90305	2	Injector bracket
90310	1	Brake cylinder bracket
90312	1	Powerreverse
90314	1	Right injector
90315	2	Inspection lid
90330	6	Coupler lift stanchions
90353	1	Hot water pump
90354	1	Hot water pipe
90355	1	Train control box lid
90356	1	Train control box
90357	1	Feed water pump
90358	1	Check valves, pr.
90359	1	Cold water pump
190-206	1	Headlight
190-219	2	Brake cylinder
190-241	1	Headlight bracket
190-247	1	Pop valves, set of 6
190-260	1	Number boards, pr.
190-268	1	Front end throttle
190-292	1	Coupler
190-307	1	Saturated steam whistle
190-312	1	Marker lights, pr.
190-320	1	Air & signal hoses