

TROLLEY

TROLLEY KITS Undecorated & Unpainted

- #125210 PCC Streamlined Trolley
- #125211 PCC Trolley Trailer
- #125220 Brill Suburban Trolley
- #125221 Brill Trolley Trailer
- #125230 IRR Trolley
- #125231 IRR Trolley Trailer
- #125240 LVT Trolley
- #125241 LVT Trolley Trailer
- #125250 Jewett Trolley
- #125251 Jewett Trolley Trailer

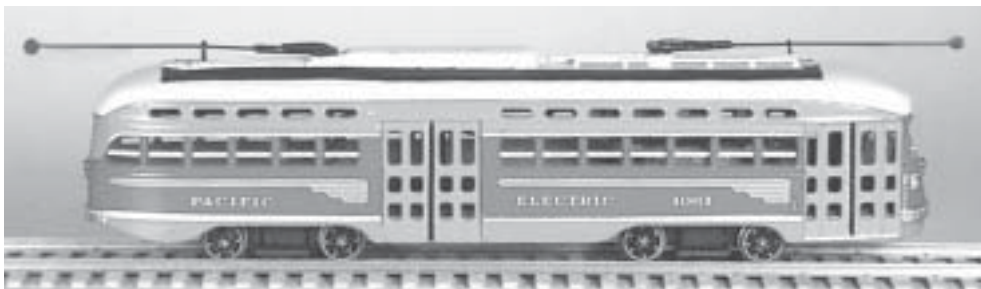
#1250 POLE ASSEMBLY



TROLLEY POLE - (1250) - Authentically detailed, full working, completely assembled and ready to mount on roof for overhead operation. Simply disconnect lead wire from trailer truck & attach to base of trolley pole.

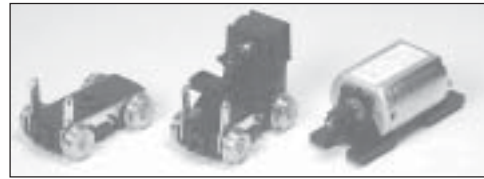
OVERHEAD WIRE SYSTEM (1299)

Complete system consists of 12 support poles (1244), 12 clips (1235), 12 speed-nuts (1245), & 25' wire (1249). Easy to assemble and adaptable to any layout, no soldering necessary. It makes your layout complete with real prototype operation.



Pacific Electric PCC
Photo courtesy of
George Huckaby

New 6' 6" Wheel Base Power Truck.



For the scratch-builder and kit basher, Bowser offers this power truck for the PCC or with Commonwealth, Brill or Baldwin side frames. This is a complete power and trailing truck with mounting brackets built in for easy assembly, 6' 6" scale wheel base (.884 between axle centers) with choice of 26", 30", or 34" scale wheels. It is suitable for trolley cars, MU cars, gas electrics, diesels and workcars.

Can motor with universals and driveshaft. Gearbox with bearings. All-wheel pickup. Body mounting bolster. Each mechanism includes electric track brake side frames, Brill side frames, IRR side frames and Baldwin side frames.

- #125100 Mechanism with 26" wheels
- #125110 Mechanism with 30" wheels
- #125120 Mechanism with 34" wheels



Repower Your Old Bowser or Pennsylvania Scale Models Trolleys

with the New Bowser Mechanism

Includes floor and mounting hardware for adapting the old PCC body to our new can motor drive

- #125141 PCC
- #125144 Brill
- #125145 IRR
- #125146 LVT or Jewett

Repower Your Bachmann HO Trolley Car

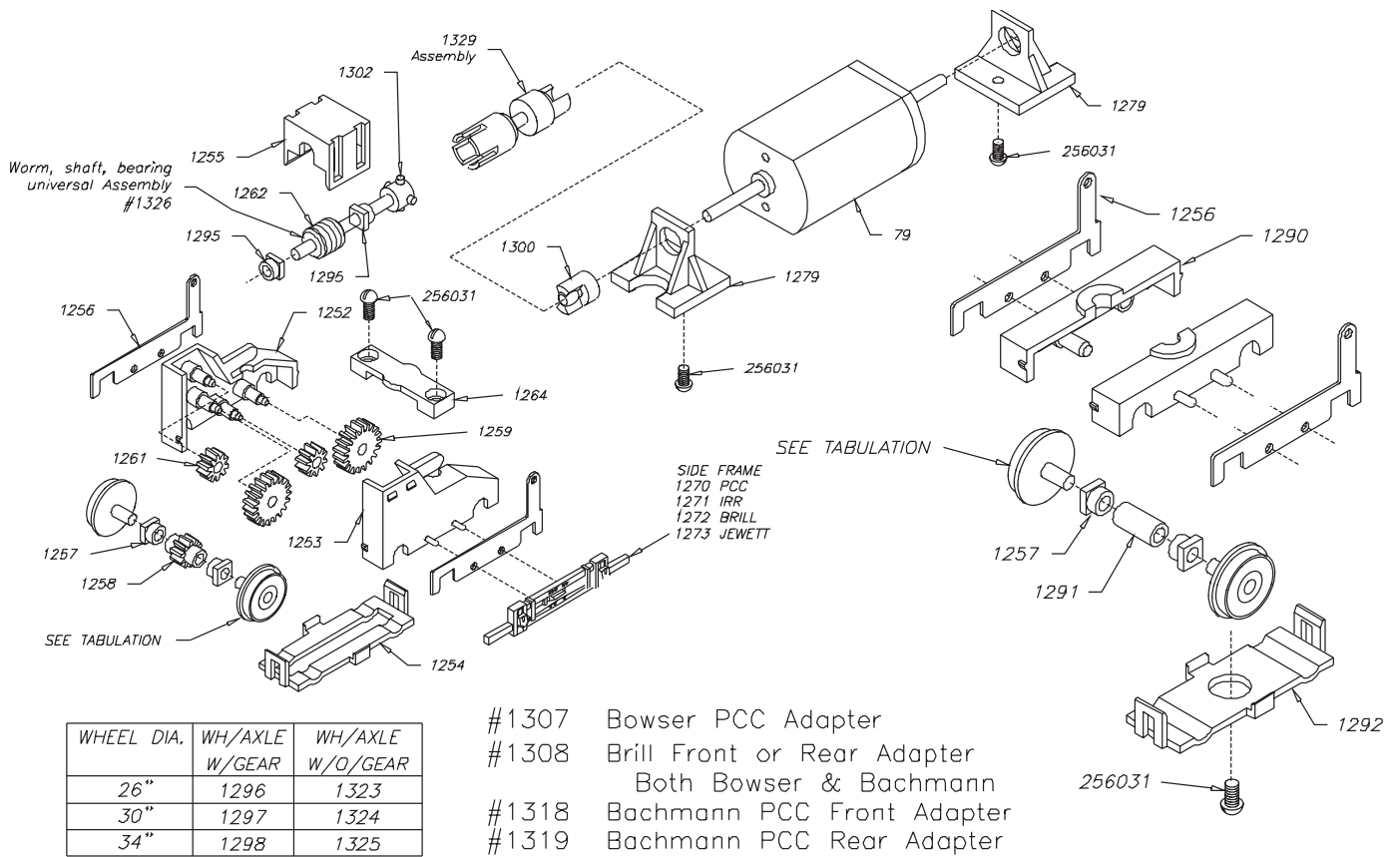
with the New Bowser Mechanism

Includes die cast floor and mounting hardware for adapting the PCC body to our new can motor drive

- #125142 For Bachmann PCC
- #125143 For Bachmann Brill

TROLLEY POWER TRUCK

Exploded view of can motor power truck



New HO Side Frames for Pacific Electric Cars fits New Bowser Power trucks

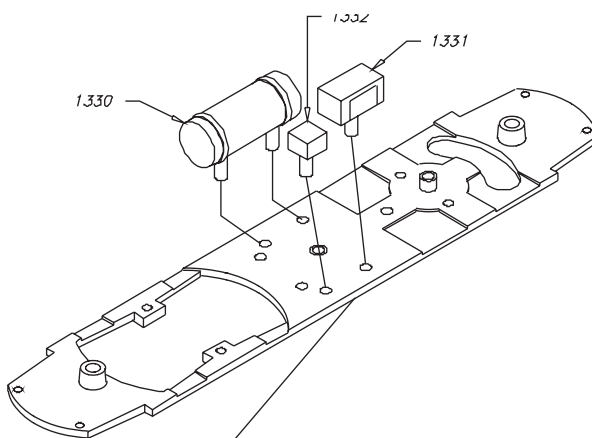


#1313

#1314

#1313 St. Louis #61 Frame \$1.50 Each
For Pacific Electric cars of the 950-999
class and others

#1314 St. Louis #23B \$1.50 Each
For Pacific Electric 250, 800 Classes & 1350
series box combines and the 1495-1499 box motors



1285 Bowser Brill Floor
Fit the mechanism to the body
The new floor may need both ends filed slightly

1333 Floor for Bachmann Brill repower kit
1283 Bowser PCC Floor
1334 Floor for Bachmann PCC repower kit
P.C.C. floors not shown

TROLLEY POWER TRUCK

TO REPAIR THE "OLD STYLE" 2 SPRING BRUSH MOUNT USE THE FOLLOWING PARTS

- #1204 UNINSULATED BRUSH POST
- #1205 INSULATED BRUSH POST
- #1215 BRUSH, MOTOR 2 SPRING ASSEMBLY
- #1216 BRUSH SPRING, 2 SPRING ASSEMBLY

Right helix gear goes next to worm than a left helix gear, than a right helix gear. Alternate right and left gears. Some Trolleys have idler shaft & gear pressed together. They are #12130 RH and #12131 LH. If the idler and gear slide apart, they are #1213 shaft, & 1210 or 1211 gear.

Trolley wheel sizes

| | |
|--------------|------------|
| PCC | 26" wheels |
| IRR & Brill | 30" wheels |
| LVT & Jewett | 34" wheels |

Body spacer for old Trolleys

| | |
|---------|--------|
| #1224 | Spacer |
| #440161 | Screw |

Body spacer for Trolleys with can motor mechanisms

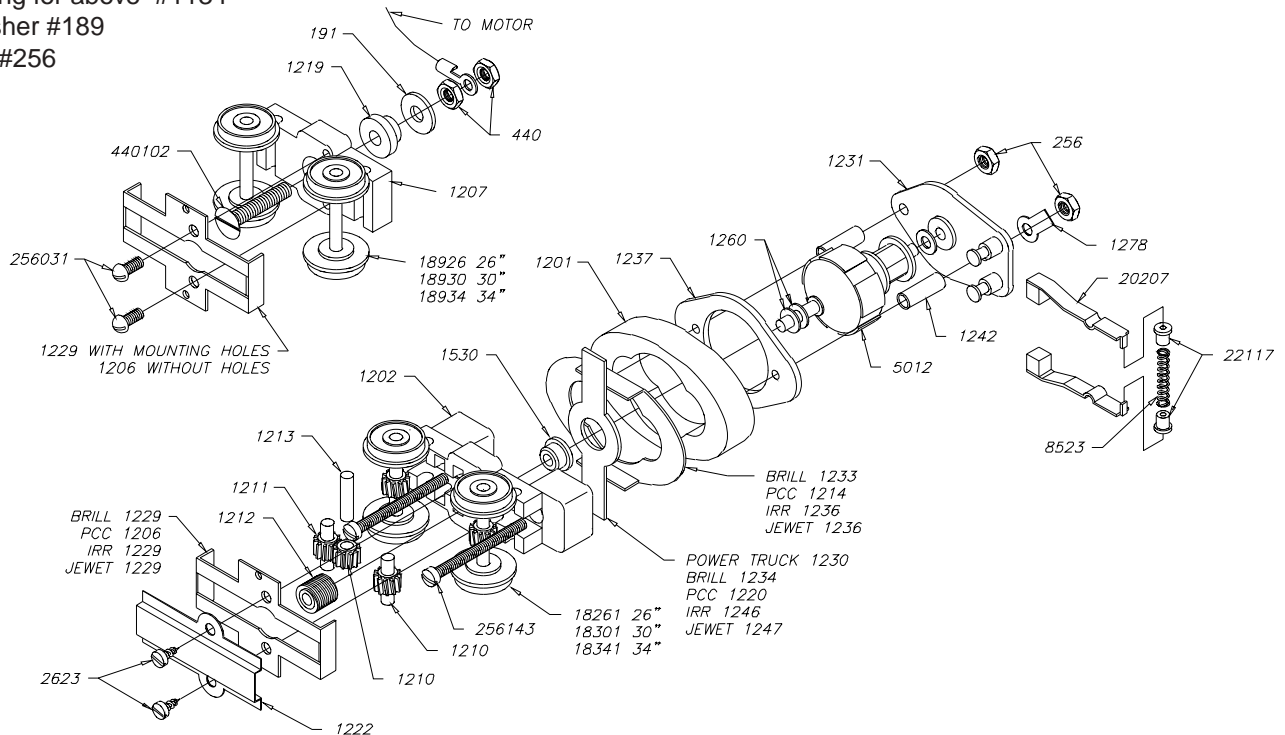
| | |
|---------|--------|
| #1328 | Spacer |
| #440 | Nut |
| #440161 | Screw |

Old Mechanism - Only individual parts available. Complete assembly discontinued

Screw to hold body to floor (old mechanism) #440161
Spacer for above #1224

Screw for Tomlinson coupler #325
Sorry their is no centering spring

Roof insulator for trolley pole #1251
Spring for above #1134
Washer #189
Nut #256



Decal for LVT #8002 - shown on our LVT trolley

