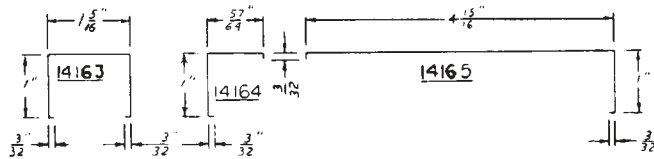


# FM BABY TRAINMASTER H-16-44



## BOWSER FMBABY TRAINMASTER - KITS

- #113000 FM H-16-44 Diesel Body Kit
- #113001 FM H-16-44 Diesel Kit, Powered
- #113051 FM H-16-44 Diesel Kit, Dummy

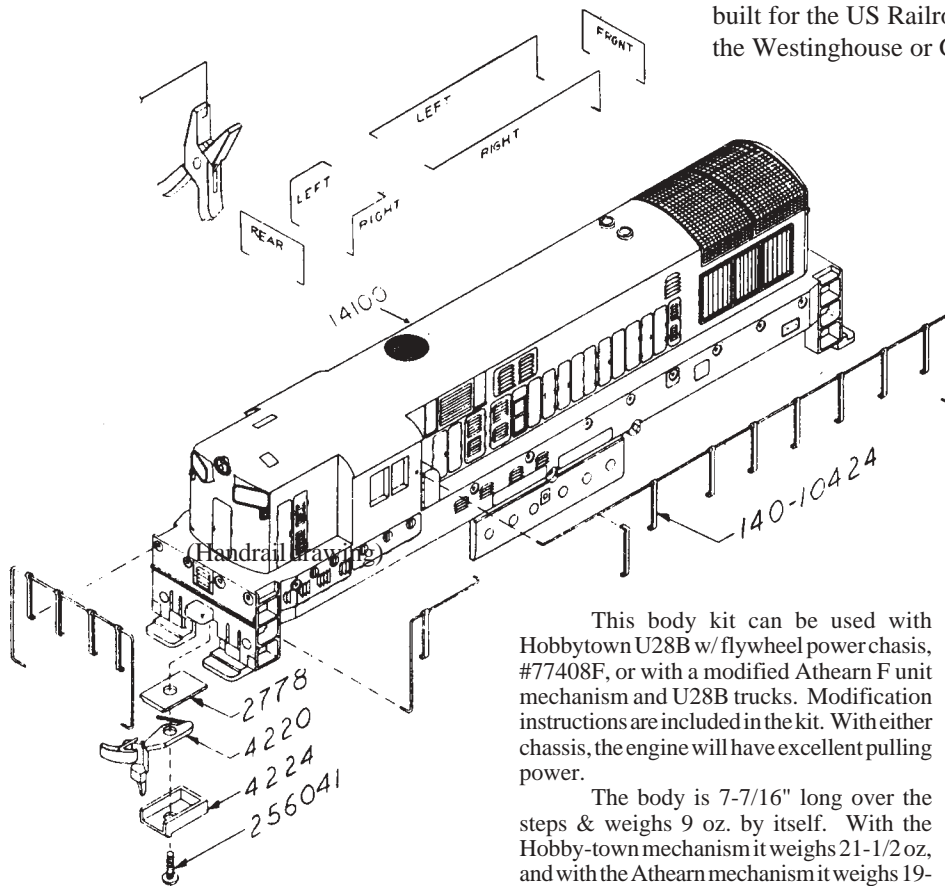
Between 1950 and 1963 approximately 296 H-16-44's were built for the US Railroad. The electrical equipment was built by the Westinghouse or GE companies.

## PROTOTYPE SPECIFICATIONS

Cylinders	24" x 28"
Drivers	68"
Steam pressure	205 lbs.
Weight	237,000 lbs.
Tractive effort	41,238 lbs.
Length of Engine	38' 2-7/8"
Height of Engine	14' 6"

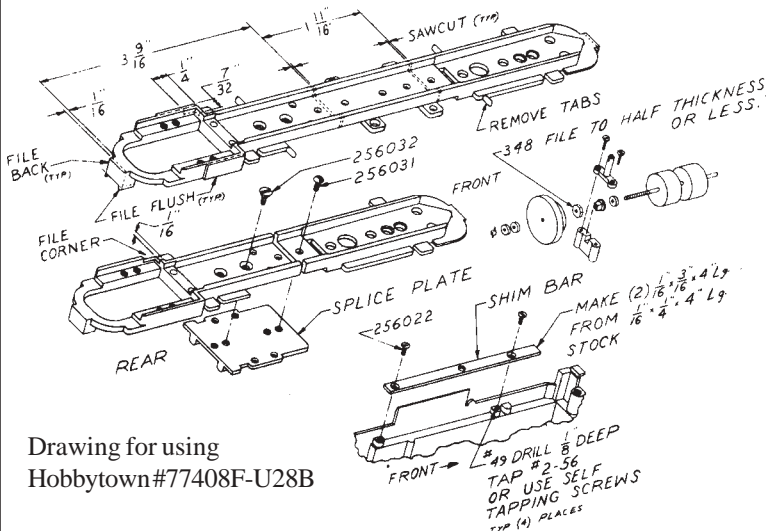
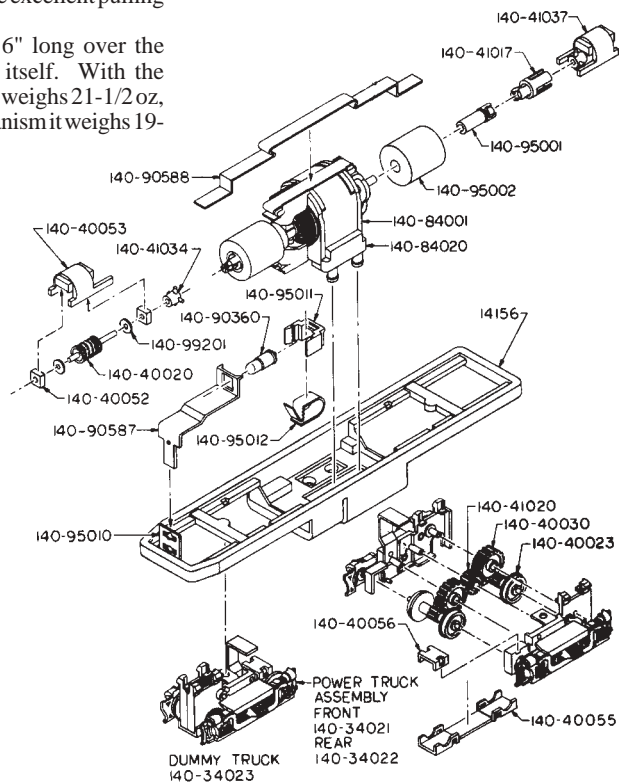
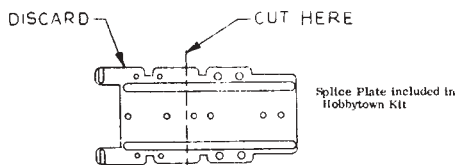
## FM 1600 HP H-16-44 USED BY:

- Akron, Canton, & Youngstown
- Baltimore & Ohio
- Bosque De Chihuahua
- Canadian National
- Canadian Pacific
- Chihuahua - Pacifico
- Milwaukee Road
- New Haven
- Norfolk & Western
- (Ex. P&WV and VA)
- Penn Central (Ex. NH)
- Pittsburgh & West Virginia
- Virginian



This body kit can be used with Hobbytown U28B w/flywheel power chassis, #77408F, or with a modified Athearn F unit mechanism and U28B trucks. Modification instructions are included in the kit. With either chassis, the engine will have excellent pulling power.

The body is 7-7/16" long over the steps & weighs 9 oz. by itself. With the Hobby-town mechanism it weighs 21-1/2 oz, and with the Athearn mechanism it weighs 19-1/2 oz.



#14157 Athearn Mechanism complete with sides mill and coupler pockets removed. Will fit into Bowser FM Body using two 0-80 x3/16" screws.