

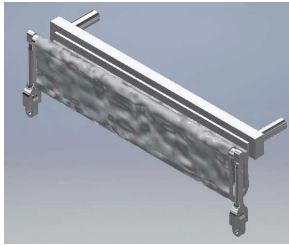
In Stock Now!



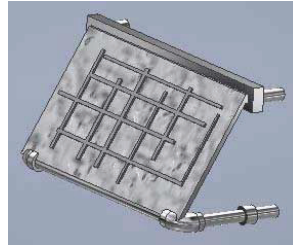
WWW.BOWSER-TRAINS.COM

HO Cal Scale Parts - Made in USA

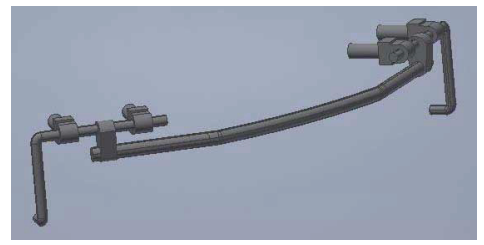
Lost Wax Brass, Plastic Molded Detail Parts & Wire Form Parts



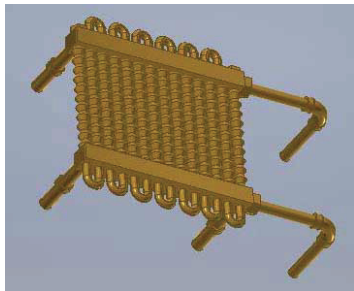
#190-678
Cab Window Shade
Cloth Stowed 2 pcs
\$6.95



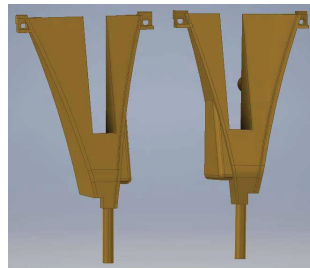
#190-679
Cab Window Shade
Cloth Open 2 pcs
\$6.95



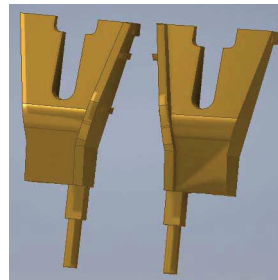
#190-682
F Unit Pilot Coupler Cut
Lever
\$2.95



#190-683
F Unit Roof Mount
Radiator Sideways
Piping
\$6.95



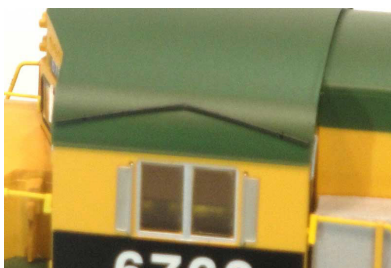
#190-686
Aldon Rerailer Pair
Left & Right
\$4.50



#190-687
DW Rerailer Pair
Left & Right
\$4.50



#190-687
DW Rerailer Pair
Left & Right
\$4.50



#190-615
Drip Ribs for Cab of
Reading locos 2pcs
\$2.95



#190-685
5 line MU
Cables 2 pair
\$6.95



#190-689
Passenger Car Steps
Straight Sided 4pcs
\$10.95

In Stock Now!



WWW.BOWSER-TRAINS.COM

O Scale Cal Scale Parts - Made in USA

Lost Wax Brass, Plastic Molded Detail Parts & Wire Form Parts



#190-3056
BOILER CHECK
VALVES W/PIPE (PR.)
\$6.50



#190-3057
GOVERNOR ON LAGGED PIPE
\$4.25



#190-3058
Early Side Mount Whistle
\$4.50



#190-3059
Nathan KS-1 15" Single
Air Horn (2)
\$5.60